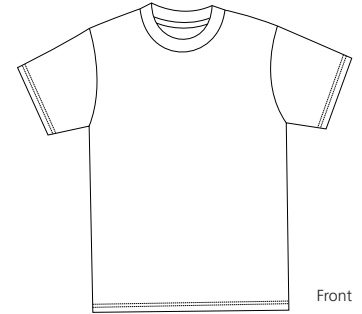
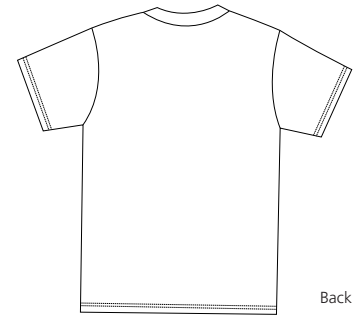


# 100% Cotton Essential T-Shirt

PORT & COMPANY®



Front



Back

**PC61**

- \* 6.1-ounce 100% cotton
- \* Taped shoulder to shoulder
- \* Coverseamed neck
- \* Double-needle hem

**Care Instructions:**

Machine wash cold, inside out, with like colors. Only non-chlorine bleach when needed. Tumble dry medium. Medium-hot iron. Do not iron decoration.

**Finished Measurements in Inches**

Size	S	M	L	XL	2XL	3XL	4XL	5XL	6XL
Neck	6.75	6.75	7.25	7.25	7.75	7.75	7.75	8.125	8.125
Width	18	20	22	24	26	28	30	32	35
Length	27	29	30	31	33	34	35	36	37
Sleeve	7.5	8	8.5	9	9.5	10	10.5	11	10

Neck measured from seam to seam. Chest width measured 1" below arm hole. Body length measured from back neck seam to hem. Sleeve length measured from center back neck seam to hem.

**Colors**

White	Athletic Maroon
<b>Lights</b>	Brown
Aquatic Blue	Cardinal
Ash**	Charcoal
Daffodil Yellow	Colonial Blue
Light Blue	Dark Green
Lime	Gold
Natural	Kelly
Orange Sherbet	Navy
Pale Pink	Olive
Sand	Orange
Stonewashed Blue	Purple
Stonewashed Green	Red
Violet	Royal
Yellow	Sangria
<b>Darks</b>	Spruce
Athletic Heather*	Steel Blue

**Please Note:**

Colors shown are approximate and for reference only. For closest match see PMS colors, or for exact match, returnable samples and grommeted samples are available.

\*90/10 Cotton/Polly

\*\*99/1 Cotton/Polly

**Color Chart**

<b>Colors</b>	Aquatic Blue	Ash	Athletic Heather	Athletic Maroon	Black	Brown	Cardinal	Charcoal
PMS	298C	No Match	No Match	229C	Process Black	7519C	208C	431C
<b>Colors</b>	Colonial Blue	Daffodil Yellow	Dark Green	Gold	Kelly	Light Blue	Lime	Natural
PMS	646C	134C	5535C	137C	340C	543C	367C	No Match
<b>Colors</b>	Navy	Olive	Orange	Orange Sherbet	Pale Pink	Purple	Red	Royal
PMS	296C	No Match	172C	1575C	670C	273C	200C	661C
<b>Colors</b>	Sand	Sangria	Spruce	Steel Blue	Stonewashed Blue	Stonewashed Green	Violet	White
PMS	No Match	227C	No Match	7546C	5414C	414C	7456C	No Match
<b>Colors</b>	Yellow							
PMS	127C							